

# ***Mastclimbers*** LLC

## ***FOR SALE***

### ***Price - \$19,000 per unit.***

#### **Satellite 4000 Mastclimber**

<b>Year Mnfr</b>	<b>1998</b>	<b>Power</b>	<b>3 Phase electric</b>
<b>Capacity</b>	<b>Up to 4,400 Lbs</b>	<b>Lifting Speed</b>	<b>25 ft/min</b>
<b>Platform length</b>	<b>41 ft single</b>	<b>Platform Height</b>	<b>60 ft</b>



Available from our customer is a 1998 satellite 4000 (Stros 2000) Mastclimber that they would like to sell quickly. They are asking \$19000.00 so it is priced to sell.

It is in great shape complete with all components and accessories.

It is complete with 12 mast sections ,2 tie back bars ,aprox 12 tubes that slide into the decks to provide front edge extensions that can be boarded with planks to get closer to work area (no planks are supplied). 4of 5' x 5' decks and 2 of 2' x 5' end decks, (41ft platform) handrails for all decks 200' of power cord. Located in Omaha ,Nebraska 68134 it is ready for you collection. Call / Fax or email for more information.

1911 Grayson Highway, Suite 8-303, Grayson, GA 30017.

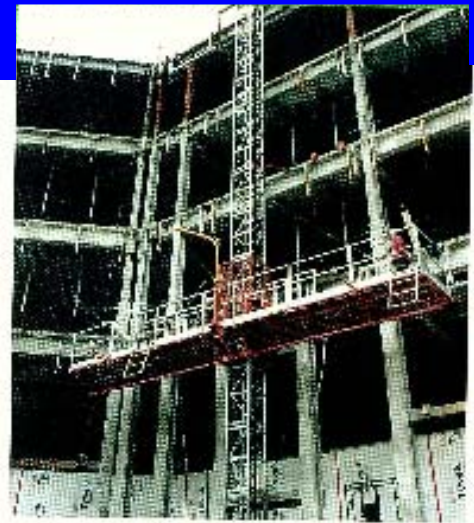
Call - 1 (678) 680 6730, -- Fax - 1 (678) 680-6733

[www.mastclimbers.com](http://www.mastclimbers.com)

Suppliers of new and used mast climbing work platforms and construction hoists, including training, parts and accessories.

Mike@Mastclimbers.com

# Mastclimbers LLC

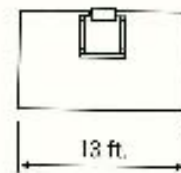


The Skill to Hoop offers FAST, EFFICIENT ACCESS for:

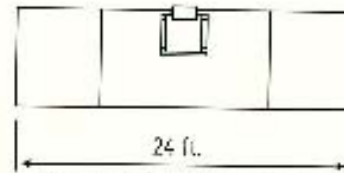
- \* TILES
- \* DRIFT
- \* CARPENTRY & PAINTING
- \* GLASSWORK
- \* RESTORATION
- \* LIGHT MASONRY

## TECHNICAL DATA

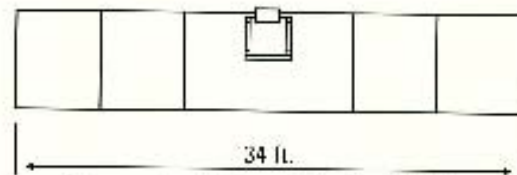
CAPACITY	SINGLE	TWIN
MAX PLATFORM LENGTH	41 Ft.	102 Ft.
MAX LOAD CAPACITY	4400 Lbs.	9250 Lbs.
<b>MAX LIFTING HEIGHT UN TIED WITH ALL OUTRIGGERS FULLY EXTENDED</b>		
MAX LIFTING HEIGHT MAST TIED	70 Ft.	70 Ft.
DISTANCE BETWEEN TIES	650 Ft.	650 Ft.
MAX. UP/OVDRTIANG NO TIES	48 Ft.	48 Ft.
VERTICAL TRAVEL SPEED	20 Ft./Minute	20 Ft./Minute
HORIZONTAL TRAVEL SPEED	25 Ft./Minute	25 Ft./Minute
<b>DIMENSIONS AND WEIGHTS</b>		
LOWEST TRANSPORT HEIGHT	7'10"	7'10"
HEIGHT TO PLATFORM	3'10"	3'10"
PLATFORM SECTION: LENGTH & WIDTH	5'3"	5'3"
PLATFORM SECTION WEIGHT	330 Lbs.	330 Lbs.
MAST SECTION LENGTH	5 Ft.	5 Ft.
MAST SECTION WEIGHT	280 Lbs.	280 Lbs.
<b>BASIC MACHINE ON TRAILER</b>		
LENGTH, WIDTH, AND HEIGHT	14'5"X6'5"X7'10"	
BASIC TRANSPORT WEIGHT	7700 Lbs.	7700 Lbs.
<b>ELECTRICAL DATA</b>		
POWER - LIFTING MOTORS	2X2.2 KW	4X2.2 KW
POWER - TRAVEL MOTOR	1X1.1 KW	1X1.1 KW
VOLTAGE / FREQUENCY	220/ 60V /HZ	220/ 60V /HZ
CONTROL VOLTAGE / FREQUENCY	110/ 60V /HZ	0/ 60V /HZ
POWER SUPPLY FUSES	15 AMPS	32 AMPS
OUTLET FOR HAND TOOLS	2/10 PCS/W	2/10 PCS/W
<b>SAFETY EQUIPMENT</b>		
TRAVEL LIMIT SWITCHES	YES	YES
CENTRIFUGAL CLUTCHES	YES	YES
OVER SPEED SAFETY DEVICE (OPTIONAL)	YES	YES
MANUAL LOWERING OF PLATFORM	YES	YES
ELECTRICAL LEVELING SYSTEM	YES	YES



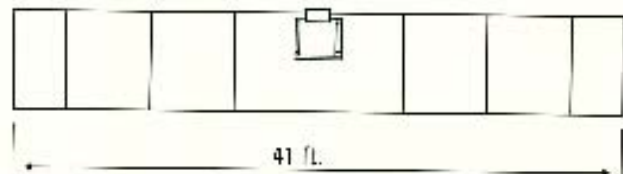
Max evenly distributed load = 4400 lbs.



Max evenly distributed load = 3740 lbs.



Max evenly distributed load = 3086 lbs.



Max evenly distributed load = 2640 lbs.

1911 Grayson Highway, Suite 8-303, Grayson, GA 30017.

Call - 1 (678) 680 6730, -- Fax - 1 (678) 680-6733

[www.mastclimbers.com](http://www.mastclimbers.com)

Suppliers of new and used mast climbing work platforms and construction hoists, including training, parts and accessories.

Mike@Mastclimbers.com