

GTP 500 / GTP 1500 / GTP 1750

The transport platforms from HEK



HEK MANUFACTURING B.V.

HEK GTP. Efficient and

For transporting materials and occasionally personnel on construction sites, the HEK GTP transport platforms are the ideal solution. Thanks to a powerful and reliable drive system, these transport platforms will safely, rapidly and efficiently transport both materials and personnel up to the required height. Because of its lightweight triangular masts, the GTP is easy to erect.

Cable guides guarantee safe and unhindered cable feed.

The GTP can be anchored either directly to the building



The galvanised triangular masts are easy to erect

or to the bearing elements of scaffolding. The galvanised mast sections of the GTP are fully interchangeable with

those of the MSL mastclimbing workplatform and the GL 500 material hoist.

Technical specifications GTP 1500

Max. payload	1500 kg incl. 7 persons
Max. mast height anchored	120 m
Hoisting/descending speed	12 m/min
Max. anchor distance	6-8 m
Distance between cable guides	6 m
Platform dimensions	4 m x 1.5 m
Motor rating	2 x 4.8 kW
Power cable	dependent on mast height and power supply
Power supply	400 V (230 V) / 3-phase / 50-60 Hz
Amperage (nominal)	32 A (50 A)
Length mast section	1508 mm
Weight mast section	47 kg
Loading height	0.60 m

Specifications are for guidance only and vary per machine configuration.

safe



Simple fault finding with Info panel.

The GTP transport platforms are all equipped with info panels which identify the problem, should the transport platform fail to operate. The info panel display is located on the platform control box.



Electrically interlocked fold down ramp.

Technical specifications GTP 500	
Max. payload	500 kg incl. 3 persons
Max. mast height anchored	120 m
Hoisting/descending speed	12 m/min
Max. anchor distance	4-6 m
Distance between cable guides	6 m
Platform dimensions	1.25 x 1.6 m
Motor rating	1 x 3.3 kW
Power cable	dependent on mast height and power supply
Power supply	400 V (230 V) / 3-phase / 50-60 Hz
Amperage (nominal)	16 A (20 A)
Length mast section	1508 mm
Weight mast section	47 kg
Loading height	0.40 m

Specifications are for guidance only and vary per machine configuration.



HEK. The leader in mastclimbing workplatforms. Those who buy our products buy safety as well.

Our experience in the development and production of mastclimbing workplatforms and hoists have paid off in the quality of our equipment for many decades: A1 materials, precise robotised production and sturdy construction ensure safety and durability. Quick assembly, lots of space on the platforms, time and energy-saving transportation of workers and materials make work rational and economical.

Wide range: There is a good reason why HEK is world leader in mastclimbing workplatforms; we offer a large and extensive range of equipment perfect for every task dealing with vertical transportation in construction.



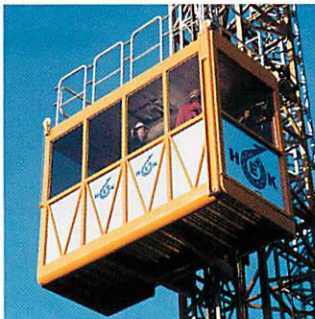
Mastclimbing workplatforms

The cost-effective alternatives to conventional scaffolding. Single or twin mast versions with platform lengths of 2.70 m to 32.6 m. Working heights of 200 m and beyond. Capacities of up to 5500 kg.



Transport platforms

The HEK transport platforms for the vertical transportation of materials and persons up to a height of 120 m. Especially suited for heavy and bulky loads with payloads of 500 kg (incl. 3 persons) up to 1750 kg (incl. 7 persons).



Personnel/ material hoists

For small, middle-sized and very large projects of up to a height of 200 m. The hoists require minimum maintenance and meet the highest safety standards.



Material hoists

Sturdy and robust material hoists made from hot-dip galvanised steel - easy to transport and simple to assemble. For loads of 500 kg and 1500 kg and heights of up to 80 m and 100 m.

Dealer:



HEK MANUFACTURING B.V.

P.O. Box 2 • NL-5090 AA Middelbeers • Tel. (+31) 13 514 8653 • Fax (+31) 13 514 8630

HEK. Really at the top.

Internet: www.HEK.com • E-mail: info@HEK.com

Equipped with numerous safety features

The GTP is equipped with a variety of safety features, including:

- static overload detection device;
- reliable fail safe brake: if the speed of descent is too high, the fail safe brake stops the transport platform;
- electrically interlocked fold down ramp: this ramp guarantees a safe stepover from the platform to the scaffolding or into the building;
- 2.5 m stop: during descent, the transport platform stops 2.5 m above the ground. After a few seconds, the platform continues to descend, whilst issuing an audio-visual warning signal;
- brake release lever: in the event of a power failure, the transport platform can be lowered to a safe exit height, using the manual brake release lever.



Optional extras

- erection platform: to facilitate the installation of anchors;
- adapter
- roof
- wheel set

Easy to load due to the low loading height.



Technical specifications GTP 1750

Max. payload	1750 kg incl. 7 persons
Max. mast height anchored	120 m
Hoisting/descending speed	12 m/min
Max. anchor distance	6-8 m
Distance between cable guides	6 m
Platform dimensions	2.6 m x 1.5 m
Motor rating	2 x 4.8 kW
Power cable	dependent on mast height and power supply
Power supply	400 V (230 V) / 3-phase / 50-60 Hz
Amperage (nominal)	32 A (50 A)
Length mast section	1508 mm
Weight mast section	47 kg
Loading height	0.60 m

Specifications are for guidance only and vary per machine configuration.

If required, the transport platform can be fitted with a roof.

GTP 1500 characteristics

- twin mast machine: the 4 m wide platform is positioned between two triangular masts;
- suitable for transporting large materials, such as plasterboard and scaffolding;
- easy to load, thanks to a loading height of only 0.60 m;
- loading is possible across the entire platform width due to the fold away doors;

A floor level safety bar can be fitted at every landing floor, for optimum safety.



GTP 500 characteristics

- single mast machine;
- particularly suitable for small construction projects where space is limited (the platform measures 1.25 x 1.60 m);
- easy to load due to a loading height of only 0.40 m;
- electrically interlocked fold down ramp;
- equipped with a lifting aid which facilitates mast erection;
- as option a floor level safety bar. This bar is fitted to each landing floor, for added safety.

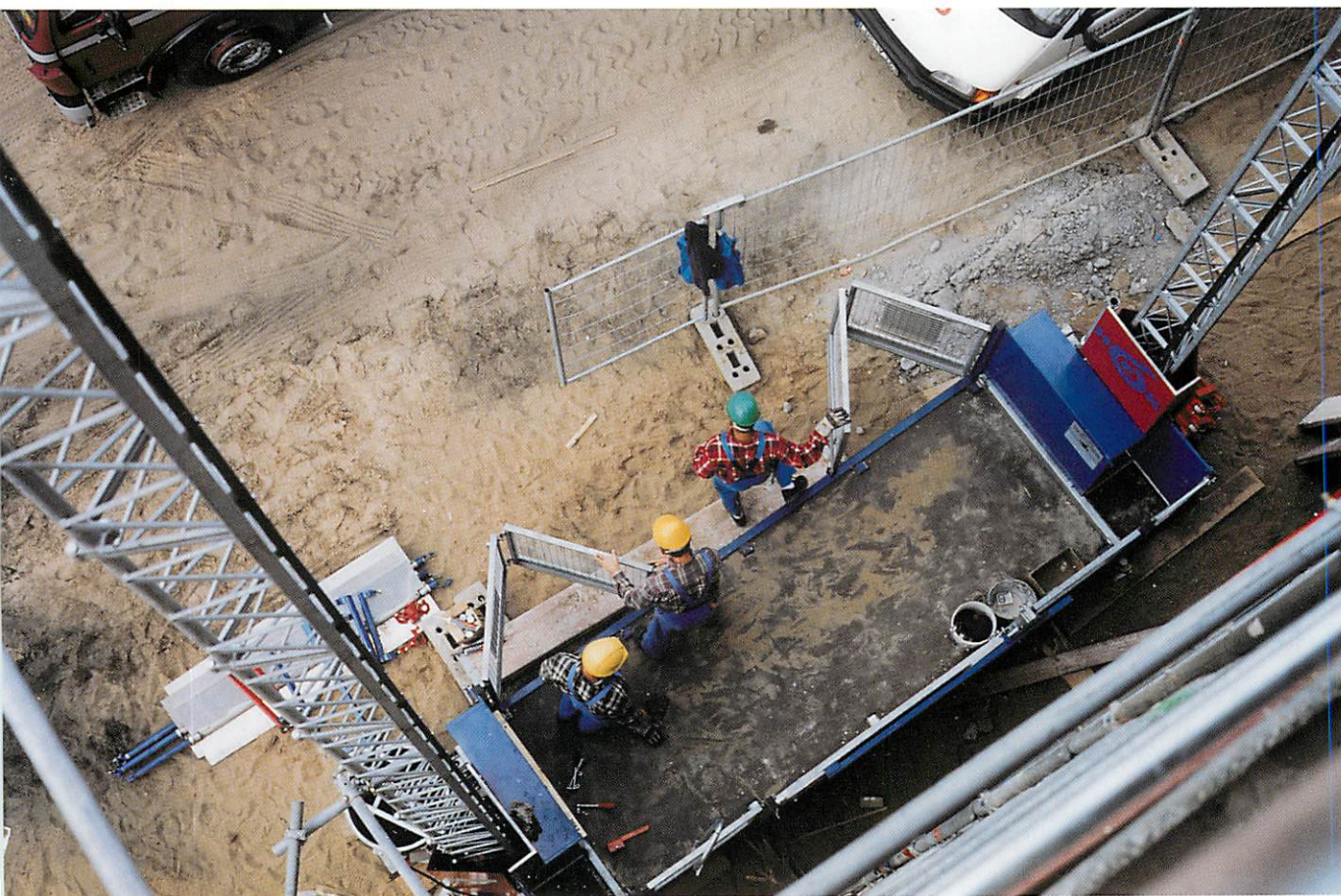


GTP 1750 characteristics

- twin mast machine;
- platform dimensions 2.6 m x 1.5 m;
- the platform is positioned between two triangular masts;
- easy to load due to a loading height of 0.60 m;
- loading is possible across the entire platform width thanks to the fold away doors.

GTP 500/GTL 500 machine

This machine can operate as both a transport platform for transporting personnel and materials (= GTP 500) and a material hoist (= GTL 500). If you wish to change from the GTP 500 to the GTL 500 function, a switch in the control box must be converted by a qualified member of staff. The type plate must also be changed. The GTL 500 is equipped with a remote control, a ground cage, and is operated from ground level. The GTP 500/GTL 500 complies with all current safety standards.



Suitable for transporting large materials.